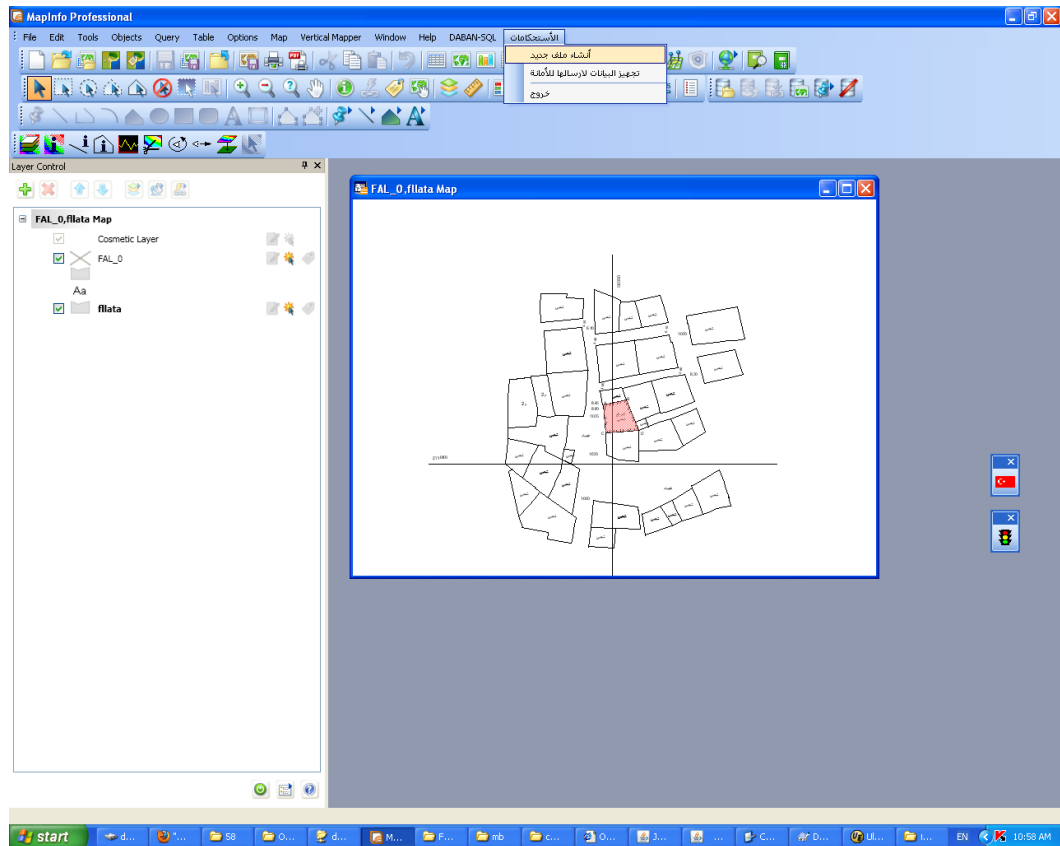


1.1 PLANNING UNORGANIZED PARCELS SERVICE V.1

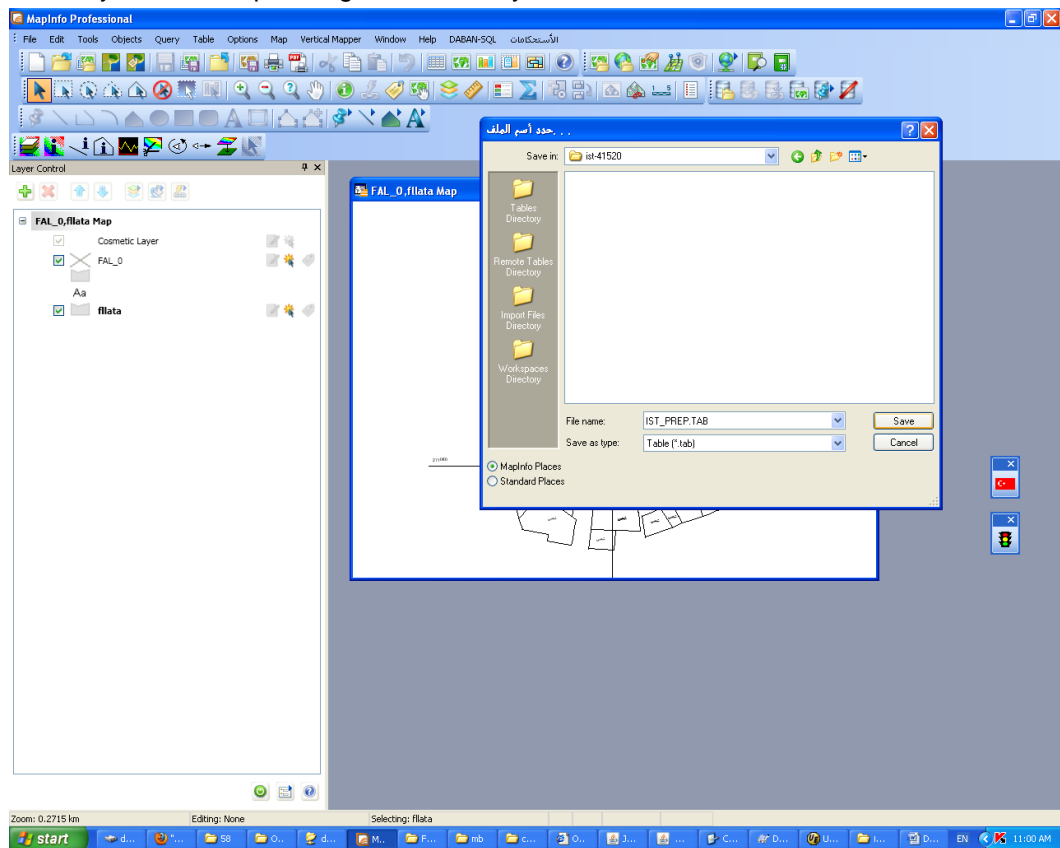
ITEM	DESCRIPTION
Name	Planning Unorganized parcels service
Description	<ul style="list-style-type: none"> This system is currently using oracle form application inside map component and add/update/display New_parcel, SAK, deed information on the map. Now Amana is upgrading oracle form to ADF application. It will be to parts first is backend (APIs) & frontend (Map). Starting point will be from engineering offices by registering and uploading survey (text file generated by map Info) Then processing that steps as per attached workflow.
System Flow	<ol style="list-style-type: none"> Engineering Office send request of the approval for this SAK. When Engineering office send request. Document field information added the database and created order number. Request is going to the MapInfo side. They can check to the related sak information and it will generate to the text file (MapInfo desktop application and Oracle database communication provided by text file). This text file includes polygon vertex coordinate. When map info side checked the SAK then generated the text file next form upload to text file. Application will update Sak table. This step we have the sak or deed information for the related building or land. Next form it's going to survey department form to examine sak information. This form inside user can enter the order number and related building and sak information display on the map. Then request going to plan department. Planning department working to this deed information and generate Tanzim document (new parcel, wadi, street information etc.) Then sending to the surveying department for approval Tanzim document. Next form downloads to the created Tanzim file. Then send it the Engineering office. (There is a user manual after Tanzim file. (http://amana-md.gov.sa/Pages/adv/Documents/-20%المكاتب%الهندسية%20%البيانات%20%قبل%20%التنظيم%20%بعد%20%التنظيم%20%.pdf)). It will generate to the text file and save the database. Next form Karar ziraa send the approval survey department. This process upload to the GIS Layer and insert new things. This step there is a 2 option. Survey department accept the engineering office document, or they can generate own document. Next form open approval karar ziraa document file. Map component displays Engineering office document with all layer information on the map. This form inside all text field editable They can edit and update to the system. Then request is going to engineering office.

Input Parameters	Order Number
Layers Involved	Parcel SAK DEED Satellite Base Map
Map Default Load	Display on the map New_parcel/deed/SAK by order No..
Map Query Load	Satellite image New_parcel/deed/SAK layer
Required Map Functions	When user open form and entering to the order number then related parcel information zoom to on the map.
Excepted Use Cases	<ul style="list-style-type: none"> • Engineering office login to the system. • Engineering office Register information • Engineering office Archive • Engineering office Upload survey (Create SAK) • Building conditions department login to the system. • Building conditions department review related layers and require feature on the map. • Building conditions department Approve (create Deed)/Add notes survey • Medina planning department login to the system. • Medina planning department (Engineers) approval • Medina planning department (painters) saving tanzeem layers • Medina planning department (auditors) approve/add notes • Medina planning department (Manager) • Naming & numbering department login to the system. • Naming & numbering department checking and adding street details or building No. • Engineering office preparing Qarar Zera'a • Building conditions department approve Qarar Zera'a • Engineering office review Qarar Zera'a • Engineering office (surveyor) sign • Engineering office (manager) sign
Add Entry in GIS System	Adding SAK Adding DEED Adding New Parcel
Update Entry in GIS System	Update SAK
Delete Entry in GIS System	Delete SAK
Existing System Screenshots and Code	<u>OFFICE APPLICATION</u>

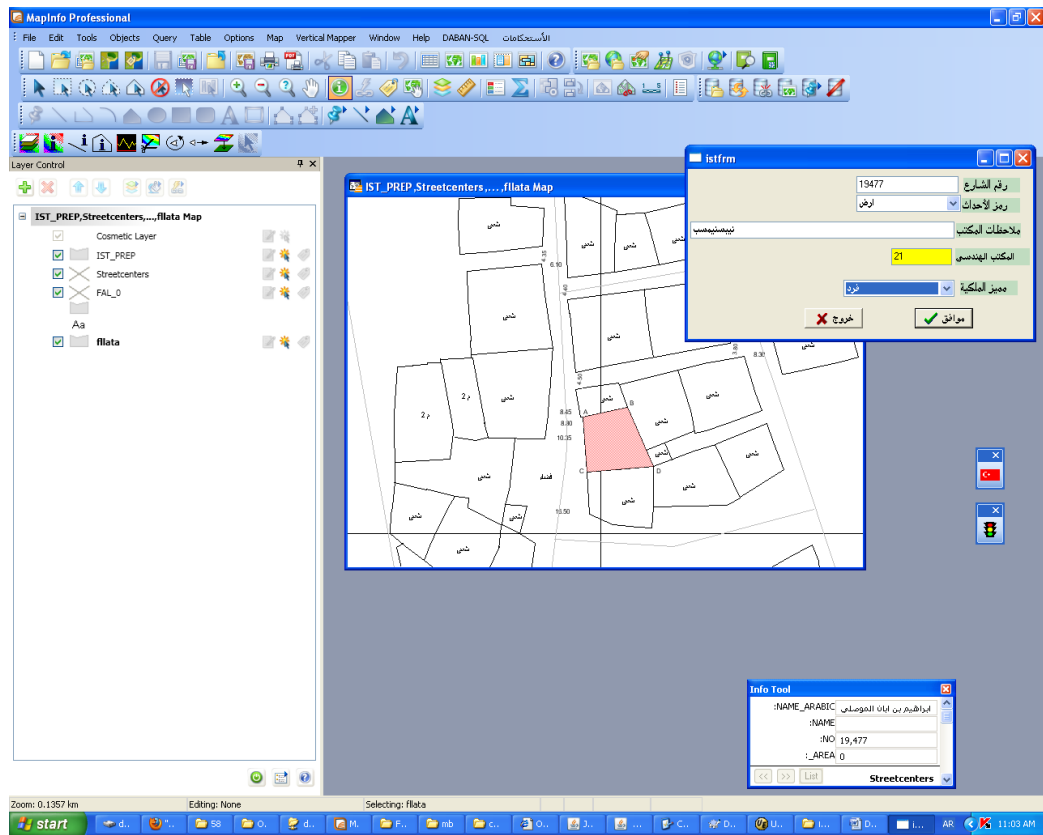
1-Open your table which is converted from autocad to mapinfo object (must be closed object) .Enter information with this menu



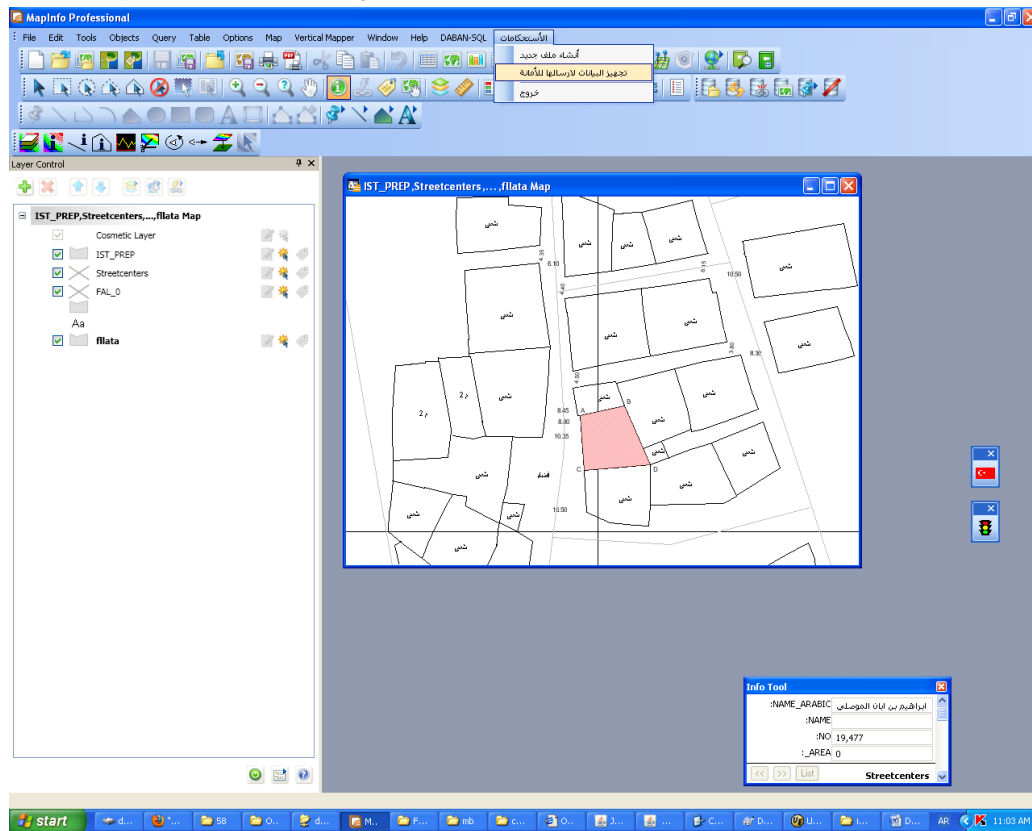
2. Save your file for uploading to Amanah system.



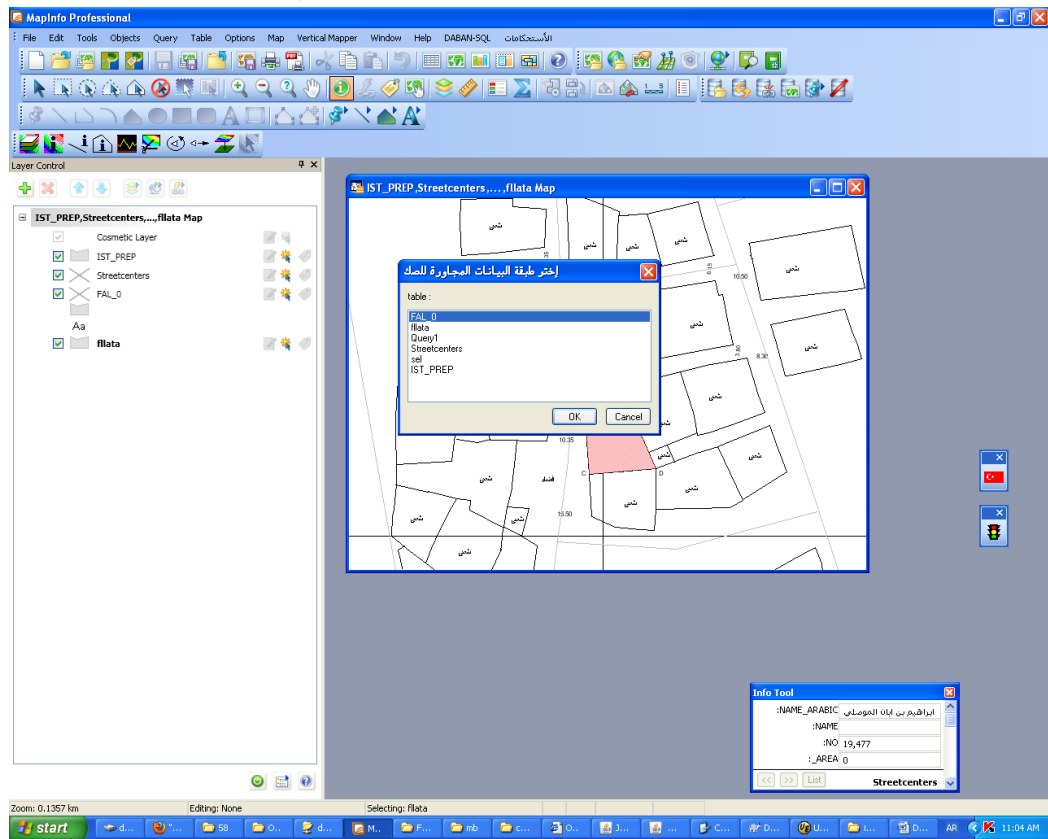
3-Enter information



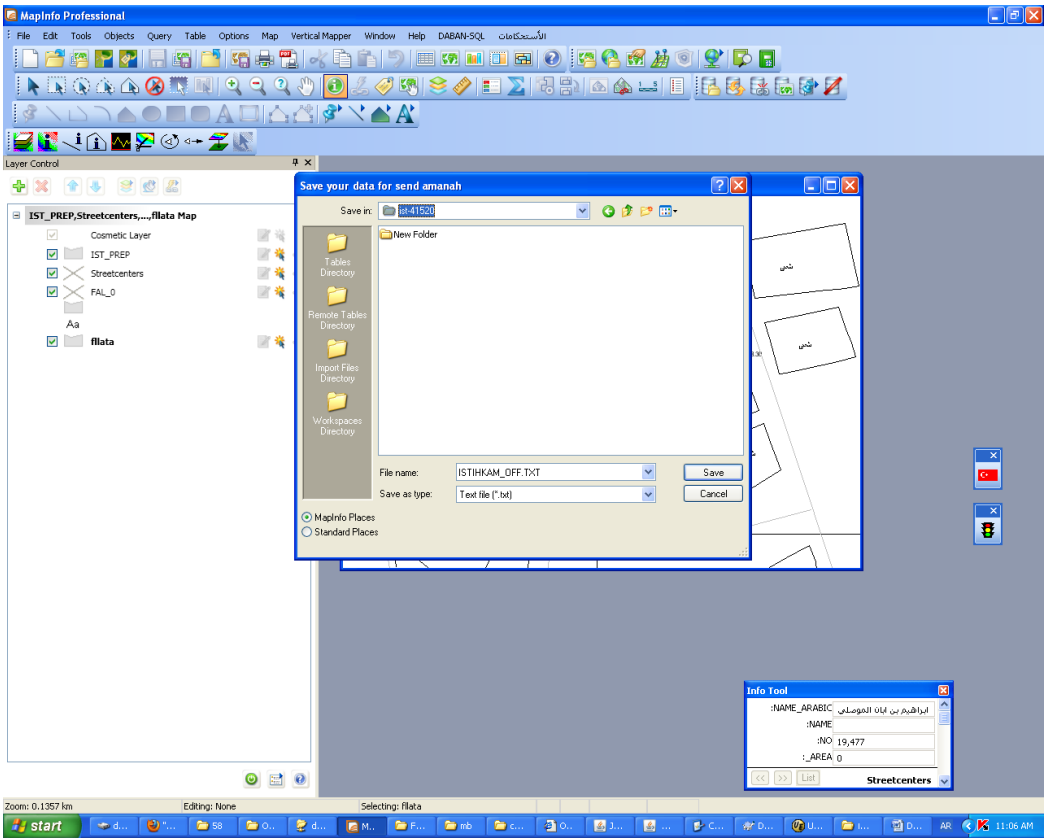
4-Prepare your data for uploading use this menu



5-Select Details(outside) layer



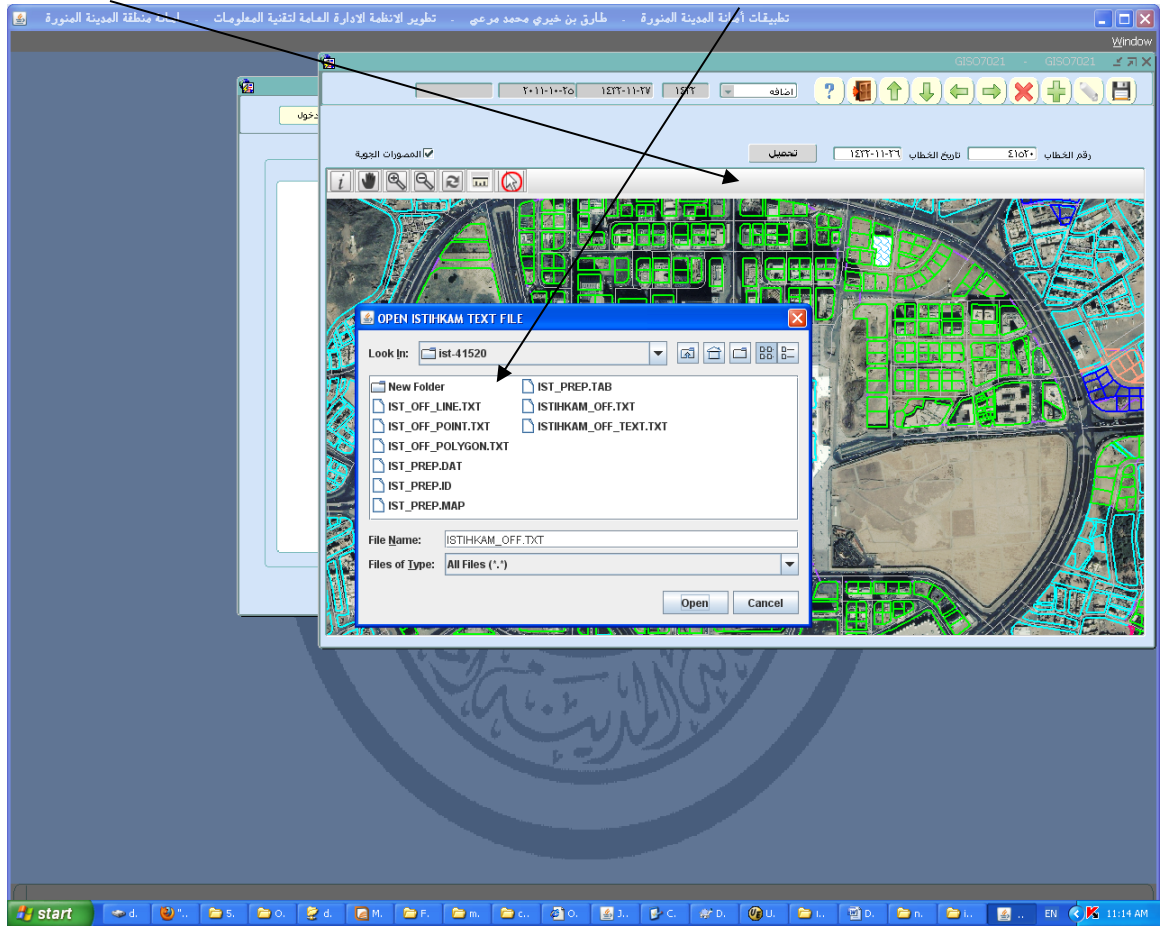
6-Save your files



7-Open amanah system and open this application (should be the new web application)

8-Before upload you order no

9-Upload your file and select your files where you saved before...



Text file names

- 1- SAK.TXT:
tabname=SAK
Fields=21
CNTNO
CNTDAT

	<div>CNTRC OWNID OWNNAME BERAUNO NRTHTXT SUTHTXT EASTTXT WESTTXT NRTHBRD SUTHBRD EASTBRD WESTBRD NRTHARA SUTHARA EASTARA WESTARA SUBJECT REMARKS plnuse ObjType=3 Rec=1 560295.988295321,2705605.65181768 560301.010014497,2705597.00357800 560312.158395985,2705603.18232034 560305.784358344,2705613.58020388 560295.988295321,2705605.65181768 Values 692 13950413 1 1038128995 ãŒÇæí ãÍãĬ ãäŒæŊ ÇáŒÇãá 210 12.60 ãĚŊ 12.75 ãĚŊ 12.20 ãĚŊ 10.00 ãĚŊ 12.6 12.75 12.2 10 ÍŒÈ ÇáŒÇ ÇáŒÇŊÚ æããã ÇáĚÈÈ æÇáÇŒŒŊÇŒ ÍŒÈ ÇáŒÈíÚã ÇáŒÇŊÚ ÈÚŊæŒ ãĬĚáÝã ãã 6.17 ã Çáí 6.80 ã æããã ÇáĚÇ ÍŒÈ ÇáŒÇ ŒŒÇŒ ÝÇŒã Èíã ĬÇŊ ÇáĚÇÆÚ ÇáŒÇÈŒ æĬÇŊ ãĬãæĬ Èã ãÚĚÇĬ ÇáĬãáí ÍŒÈ ÇáŒÈíÚã ŒŒÇŒ ÈÚŊæŒ ãĬĚáÝã ãã ÍŒÈ ÇáŒÇ ÇáŒÇŊÚ æããã ÇáĚÈÈ æÇáÇŒŒŊÇŒ ÍŒÈ ÇáŒÈíÚã ÇáŒÇŊÚ ÈÚŊæŒ ãĬĚáÝã ãã 4.48 ã Çáí 5.18 ã æããã ÇáĚÇ ĬÇŊ ÚÇĚĬ Èã ãŪíãŒ ÇáŒŪíÝí</div>
--	--

ÇÈÈÇÊ ãÓÇíà æÚÑæÖ ÔæÇÑÚ
Çáæßíá ÇáÕÑÚí ãíãí ÓáíãÇä åÐíá ÇáãÛÐæí
9510

2- SAK_DETAILS_LINE.TXT :

tablename=SAK_DETAILS_LINE

Fields=1

STYLE_STR

ObjType=2

Rec=1

560364.197919337,2705600.43287998

560366.201659501,2705608.42125397

Values

Pen (1, 2, 0)

Rec=2

560352.084774066,2705591.93460978

560352.455837059,2705574.69811822

Values

Pen (1, 2, 0)

Rec=3

560377.317057612,2705602.68242209

560378.215854640,2705596.05377133

Values

Pen (1, 2, 0)

Rec=4

560348.184489714,2705594.81402368

560348.135014648,2705593.30433097

Values

Pen (1, 2, 0)

Rec=5

560348.135014648,2705593.30433097

560348.052556205,2705592.73444697

Values

Pen (1, 2, 0)

Rec=6

560348.052556205,2705592.73444697

560347.994835295,2705591.79463827

Values

Pen (1, 2, 0)

Rec=7

560345.644769671,2705609.30107488

560344.531580691,2705607.20150225

Values

Pen (1, 2, 0)

Rec=8

560371.883046221,2705595.27393007

560387.583133760,2705597.21353527

Values

Pen (1, 2, 0)
Rec=9
560390.427950042,2705604.69201304
560387.583133760,2705597.21353527
Values
Pen (1, 2, 0)
Rec=10
560382.388251854,2705553.07252004
560367.174669128,2705552.36266453
Values
Pen (1, 2, 0)
Rec=11
560364.197919337,2705600.43287998
560366.201659501,2705608.42125397
Values
Pen (1, 2, 0)
Rec=12
560390.023903672,2705588.95521622
560391.689564220,2705589.05519587
Values
Pen (1, 2, 0)
Rec=13
560373.622919367,2705581.35676287
560376.822306954,2705583.72628056
Values
Pen (1, 2, 0)
Rec=14
560376.822306954,2705583.72628056
560377.671628916,2705584.28616660
Values
Pen (1, 2, 0)
Rec=15
560377.671628916,2705584.28616660
560379.213601800,2705579.62711493
Values
Pen (1, 2, 0)
Rec=16
560389.075631578,2705578.16741205
560390.535146018,2705578.47734896
Values
Pen (1, 2, 0)
Rec=17
560390.535146018,2705578.47734896
560391.689564220,2705578.77728791
Values
Pen (1, 2, 0)
Rec=18

560391.689564220,2705568.51937588
560391.062880053,2705568.50937791
Values
Pen (1, 2, 0)
Rec=19
560391.062880053,2705568.50937791
560384.911480208,2705567.62955700
Values
Pen (1, 2, 0)
Rec=20
560384.911480208,2705567.62955700
560384.012683180,2705570.98887322
Values
Pen (1, 2, 0)
Rec=21
560384.012683180,2705570.98887322
560382.784052380,2705575.27800018
Values
Pen (1, 2, 0)
Rec=22
560382.784052380,2705575.27800018
560382.182105746,2705577.05763794
Values
Pen (1, 2, 0)
Rec=23
560352.455837059,2705574.69811822
560355.490307760,2705574.29819962
Values
Pen (1, 2, 0)
Rec=24
560355.490307760,2705574.29819962
560368.329087329,2705584.28616660
Values
Pen (1, 2, 0)
Rec=25
560368.329087329,2705584.28616660
560363.703168679,2705591.18476241
Values
Pen (1, 2, 0)
Rec=26
560363.703168679,2705591.18476241
560352.084774066,2705591.93460978
Values
Pen (1, 2, 0)
Rec=27
560356.521038297,2705568.06946746
560364.346344534,2705573.96826677

Values
Pen (1, 2, 0)
Rec=28
560369.104196693,2705564.05028555
560360.396585116,2705560.79094898
Values
Pen (1, 2, 0)
Rec=29
560360.396585116,2705560.79094898
560360.215176542,2705561.04089810
Values
Pen (1, 2, 0)
Rec=30
560367.273619259,2705576.21780889
560369.137180070,2705577.59752805
Values
Pen (1, 2, 0)
Rec=31
560369.137180070,2705577.59752805
560370.992495037,2705579.05723093
Values
Pen (1, 2, 0)
Rec=32
560370.992495037,2705579.05723093
560373.622919367,2705581.35676287
Values
Pen (1, 2, 0)
Rec=33
560364.346344534,2705573.96826677
560369.104196693,2705564.05028555
Values
Pen (1, 2, 0)
Rec=34
560382.561414584,2705567.43959567
560382.033680549,2705569.58915813
Values
Pen (1, 2, 0)
Rec=35
560382.033680549,2705569.58915813
560381.514192358,2705571.73872059
Values
Pen (1, 2, 0)
Rec=36
560381.514192358,2705571.73872059
560380.986458323,2705573.88828305
Values
Pen (1, 2, 0)

Rec=37
560379.980465319,2705566.95969335
560382.561414584,2705567.43959567
Values
Pen (1, 2, 0)
Rec=38
560379.980465319,2705566.95969335
560382.561414584,2705567.43959567
Values
Pen (1, 2, 0)
Rec=39
560372.237617525,2705565.08007594
560379.980465319,2705566.96969131
Values
Pen (1, 2, 0)
Rec=40
560385.777293859,2705588.36533629
560387.583133760,2705582.83646168
Values
Pen (1, 2, 0)
Rec=41
560387.583133760,2705582.83646168
560389.182827554,2705577.80748531
Values
Pen (1, 2, 0)
Rec=42
560389.182827554,2705577.80748531
560382.182105746,2705577.05763794
Values
Pen (1, 2, 0)
Rec=43
560382.182105746,2705577.05763794
560381.184358587,2705581.66669978
Values
Pen (1, 2, 0)
Rec=44
560381.184358587,2705581.66669978
560380.186611427,2705586.55570464
Values
Pen (1, 2, 0)
Rec=45
560380.186611427,2705586.55570464
560385.777293859,2705588.36533629
Values
Pen (1, 2, 0)
Rec=46
560380.986458323,2705573.88828305

560380.046432074,2705577.07763387
Values
Pen (1, 2, 0)
Rec=47
560380.046432074,2705577.07763387
560379.213601800,2705579.62711493
Values
Pen (1, 2, 0)
Rec=48
560357.122984931,2705610.02092836
560355.506799449,2705606.02174238
Values
Pen (1, 2, 0)
Rec=49
560377.317057612,2705602.68242209
560376.748094355,2705606.82157958
Values
Pen (1, 2, 0)
Rec=50
560364.197919337,2705600.43287998
560364.321607001,2705599.50306924
Values
Pen (1, 2, 0)
Rec=51
560364.321607001,2705599.50306924
560365.467779358,2705594.49408880
Values
Pen (1, 2, 0)
Rec=52
560365.467779358,2705594.49408880
560371.883046221,2705595.27393007
Values
Pen (1, 2, 0)
Rec=53
560348.077293738,2705600.79280672
560349.033811677,2705604.81198862
Values
Pen (1, 2, 0)
Rec=54
560349.033811677,2705604.81198862
560340.763229848,2705609.21109320
Values
Pen (1, 2, 0)
Rec=55
560340.763229848,2705609.21109320
560337.060845759,2705611.16069636
Values

Pen (1, 2, 0)
Rec=56
560337.060845759,2705611.16069636
560332.789498413,2705613.81015707
Values
Pen (1, 2, 0)
Rec=57
560354.566773199,2705563.45040765
560354.616248265,2705565.35002099
Values
Pen (1, 2, 0)
Rec=58
560354.616248265,2705565.35002099
560354.954327881,2705566.39980731
Values
Pen (1, 2, 0)
Rec=59
560354.954327881,2705566.39980731
560355.424341006,2705567.07966893
Values
Pen (1, 2, 0)
Rec=60
560355.424341006,2705567.07966893
560356.521038297,2705568.06946746
Values
Pen (1, 2, 0)
Rec=61
560360.215176542,2705561.04089810
560354.764673462,2705559.22126848
Values
Pen (1, 2, 0)
Rec=62
560353.412354998,2705542.52466703
560353.478321752,2705542.00477285
Values
Pen (1, 2, 0)
Rec=63
560369.912289434,2705545.60404023
560371.297591276,2705542.00477285
Values
Pen (1, 2, 0)
Rec=64
560382.421235231,2705542.19473418
560382.388251854,2705553.07252004
Values
Pen (1, 2, 0)
Rec=65

560367.273619259,2705576.21780889
560372.237617525,2705565.08007594
Values
Pen (1, 2, 0)
Rec=66
560262.279283839,2705542.00477285
560255.971212952,2705549.21330557
Values
Pen (1, 2, 0)
Rec=67
560255.971212952,2705549.21330557
560256.193850748,2705549.39326894
Values
Pen (1, 2, 0)
Rec=68
560256.193850748,2705549.39326894
560253.035692383,2705554.76217612
Values
Pen (1, 2, 0)
Rec=69
560240.732892693,2705553.09251597
560239.001265391,2705553.06252208
Values
Pen (1, 2, 0)
Rec=70
560239.001265391,2705553.06252208
560234.820622333,2705548.13352536
Values
Pen (1, 2, 0)
Rec=71
560234.820622333,2705548.13352536
560240.023750084,2705542.00477285
Values
Pen (1, 2, 0)
Rec=72
560255.385758007,2705551.08292502
560256.325784257,2705551.56282734
Values
Pen (1, 2, 0)
Rec=73
560240.732892693,2705553.09251597
560247.313076441,2705553.43244678
Values
Pen (1, 2, 0)
Rec=74
560247.313076441,2705553.43244678
560250.644397537,2705553.98233485

Values
Pen (1, 2, 0)
Rec=75
560250.644397537,2705553.98233485
560253.035692383,2705554.76217612
Values
Pen (1, 2, 0)
Rec=76
560255.971212952,2705549.21330557
560247.172897088,2705542.00477285
Values
Pen (1, 2, 0)
Rec=77
560344.407893026,2705554.04232264
560345.479852785,2705546.75380620
Values
Pen (1, 2, 0)
Rec=78
560345.479852785,2705546.75380620
560345.850915778,2705543.50446759
Values
Pen (1, 2, 0)
Rec=79
560345.850915778,2705543.50446759
560346.296191370,2705542.00477285
Values
Pen (1, 2, 0)
Rec=80
560334.710780134,2705542.00477285
560331.668063589,2705549.21330557
Values
Pen (1, 2, 0)
Rec=81
560331.668063589,2705549.21330557
560339.377928006,2705551.82277442
Values
Pen (1, 2, 0)
Rec=82
560339.377928006,2705551.82277442
560344.407893026,2705554.04232264
Values
Pen (1, 2, 0)
Rec=83
560331.668063589,2705549.21330557
560328.988164193,2705548.21350908
Values
Pen (1, 2, 0)

Rec=84
560328.988164193,2705548.21350908
560322.251309403,2705545.69402191
Values
Pen (1, 2, 0)
Rec=85
560322.251309403,2705545.69402191
560323.216073186,2705542.00477285
Values
Pen (1, 2, 0)
Rec=86
560283.471103679,2705543.76441468
560281.277709097,2705542.00477285
Values
Pen (1, 2, 0)
Rec=87
560285.013076563,2705542.00477285
560283.471103679,2705543.76441468
Values
Pen (1, 2, 0)
Rec=88
560283.471103679,2705543.76441468
560276.214760699,2705551.30288025
Values
Pen (1, 2, 0)
Rec=89
560276.214760699,2705551.30288025
560271.324975031,2705544.42428037
Values
Pen (1, 2, 0)
Rec=90
560271.324975031,2705544.42428037
560273.097831555,2705542.00477285
Values
Pen (1, 2, 0)
Rec=91
560271.324975031,2705544.42428037
560269.436676687,2705542.00477285
Values
Pen (1, 2, 0)
Rec=92
560265.305508695,2705563.10047888
560272.116576084,2705556.68178539
Values
Pen (1, 2, 0)
Rec=93
560272.116576084,2705556.68178539

560276.214760699,2705551.30288025
Values
Pen (1, 2, 0)
Rec=94
560265.305508695,2705563.10047888
560257.694594410,2705559.29125424
Values
Pen (1, 2, 0)
Rec=95
560257.694594410,2705559.29125424
560258.494441307,2705557.44163072
Values
Pen (1, 2, 0)
Rec=96
560258.494441307,2705557.44163072
560254.676615398,2705554.61220664
Values
Pen (1, 2, 0)
Rec=97
560254.676615398,2705554.61220664
560256.325784257,2705551.56282734
Values
Pen (1, 2, 0)
Rec=98
560289.704961967,2705542.00477285
560285.433614622,2705546.77380213
Values
Pen (1, 2, 0)
Rec=99
560285.433614622,2705546.77380213
560290.422350421,2705551.16290874
Values
Pen (1, 2, 0)
Rec=100
560290.422350421,2705551.16290874
560293.258920859,2705553.13250783
Values
Pen (1, 2, 0)
Rec=101
560293.258920859,2705553.13250783
560294.792647898,2705554.21228805
Values
Pen (1, 2, 0)
Rec=102
560294.792647898,2705554.21228805
560302.230399453,2705542.59465278
Values

Pen (1, 2, 0)
Rec=103
560302.230399453,2705542.59465278
560301.488273466,2705542.00477285
Values
Pen (1, 2, 0)
Rec=104
560302.230399453,2705542.59465278
560313.065438858,2705549.73319975
Values
Pen (1, 2, 0)
Rec=105
560313.065438858,2705549.73319975
560300.721409946,2705569.12925174
Values
Pen (1, 2, 0)
Rec=106
560290.125500026,2705561.49080653
560294.792647898,2705554.21228805
Values
Pen (1, 2, 0)
Rec=107
560286.719966332,2705570.08905638
560289.597765991,2705571.08885287
Values
Pen (1, 2, 0)
Rec=108
560289.597765991,2705571.08885287
560296.210933117,2705575.71791064
Values
Pen (1, 2, 0)
Rec=109
560323.356252539,2705556.83175486
560314.508461609,2705576.16781906
Values
Pen (1, 2, 0)
Rec=110
560311.012223628,2705574.13823218
560311.193632202,2705573.09844382
Values
Pen (1, 2, 0)
Rec=111
560311.193632202,2705573.09844382
560307.153168497,2705571.61874501
Values
Pen (1, 2, 0)
Rec=112

560307.153168497,2705571.61874501
560303.195163235,2705569.96908080
Values
Pen (1, 2, 0)
Rec=113
560299.022766021,2705575.57793913
560307.639673311,2705581.78667536
Values
Pen (1, 2, 0)
Rec=114
560302.898312840,2705570.48897497
560314.120906927,2705550.88296572
Values
Pen (1, 2, 0)
Rec=115
560323.356252539,2705556.83175486
560320.404240281,2705554.74218019
Values
Pen (1, 2, 0)
Rec=116
560320.404240281,2705554.74218019
560314.120906927,2705550.88296572
Values
Pen (1, 2, 0)
Rec=117
560305.767866656,2705586.05580639
560311.012223628,2705574.13823218
Values
Pen (1, 2, 0)
Rec=118
560322.845010192,2705579.66710679
560317.180115161,2705576.22780685
Values
Pen (1, 2, 0)
Rec=119
560317.180115161,2705576.22780685
560324.832258668,2705556.58180574
Values
Pen (1, 2, 0)
Rec=120
560324.832258668,2705556.58180574
560333.053365431,2705561.51080245
Values
Pen (1, 2, 0)
Rec=121
560333.053365431,2705561.51080245
560331.395950727,2705564.29023671

Values
Pen (1, 2, 0)
Rec=122
560331.395950727,2705564.29023671
560332.962661144,2705566.01988464
Values
Pen (1, 2, 0)
Rec=123
560332.443172953,2705566.66975237
560332.962661144,2705566.01988464
Values
Pen (1, 2, 0)
Rec=124
560332.467910486,2705566.74973609
560333.713032975,2705571.94867786
Values
Pen (1, 2, 0)
Rec=125
560333.713032975,2705571.94867786
560333.045119587,2705576.74770103
Values
Pen (1, 2, 0)
Rec=126
560333.045119587,2705576.74770103
560332.838973479,2705582.66649628
Values
Pen (1, 2, 0)
Rec=127
560349.206974407,2705575.55794320
560333.045119587,2705576.74770103
Values
Pen (1, 2, 0)
Rec=128
560332.962661144,2705566.01988464
560335.683789761,2705562.60058063
Values
Pen (1, 2, 0)
Rec=129
560243.074712473,2705614.29005939
560260.605377447,2705608.85116646
Values
Pen (1, 2, 0)
Rec=130
560260.605377447,2705608.85116646
560256.672109717,2705601.07274974
Values
Pen (1, 2, 0)

Rec=131
560256.672109717,2705601.07274974
560252.070928600,2705603.58223894
Values
Pen (1, 2, 0)
Rec=132
560252.070928600,2705603.58223894
560242.670666103,2705612.31046233
Values
Pen (1, 2, 0)
Rec=133
560242.670666103,2705612.31046233
560243.074712473,2705614.29005939
Values
Pen (1, 2, 0)
Rec=134
560257.282302195,2705619.64896860
560257.084401932,2705615.84974192
Values
Pen (1, 2, 0)
Rec=135
560257.084401932,2705615.84974192
560256.672109717,2705615.74976227
Values
Pen (1, 2, 0)
Rec=136
560256.672109717,2705615.74976227
560256.573159586,2705611.55061700
Values
Pen (1, 2, 0)
Rec=137
560256.573159586,2705611.55061700
560242.415044930,2705616.04970122
Values
Pen (1, 2, 0)
Rec=138
560242.415044930,2705616.04970122
560243.190154293,2705621.37861654
Values
Pen (1, 2, 0)
Rec=139
560243.190154293,2705621.37861654
560257.282302195,2705619.64896860
Values
Pen (1, 2, 0)
Rec=140
560242.670666103,2705612.31046233

560239.265132408,2705615.50981111
Values
Pen (1, 2, 0)
Rec=141
560239.265132408,2705615.50981111
560235.513273254,2705611.68059054
Values
Pen (1, 2, 0)
Rec=142
560235.513273254,2705611.68059054
560232.915832301,2705610.10091208
Values
Pen (1, 2, 0)
Rec=143
560232.915832301,2705610.10091208
560249.061195432,2705585.89583895
Values
Pen (1, 2, 0)
Rec=144
560249.061195432,2705585.89583895
560263.211064244,2705595.32391989
Values
Pen (1, 2, 0)
Rec=145
560263.211064244,2705595.32391989
560257.455464925,2705602.25250960
Values
Pen (1, 2, 0)
Rec=146
560254.610648643,2705602.19252181
560243.511742221,2705594.21414578
Values
Pen (1, 2, 0)
Rec=147
560233.872350239,2705605.33188280
560226.211960888,2705599.71302650
Values
Pen (1, 2, 0)
Rec=148
560226.211960888,2705599.71302650
560227.283920646,2705598.19333583
Values
Pen (1, 2, 0)
Rec=149
560227.283920646,2705598.19333583
560233.460058024,2705587.33554590
Values

Pen (1, 2, 0)
Rec=150
560233.460058024,2705587.33554590
560235.966794690,2705584.57610758
Values
Pen (1, 2, 0)
Rec=151
560235.966794690,2705584.57610758
560242.901549743,2705588.25535868
Values
Pen (1, 2, 0)
Rec=152
560242.901549743,2705588.25535868
560244.501243536,2705589.32514093
Values
Pen (1, 2, 0)
Rec=153
560244.501243536,2705589.32514093
560233.872350239,2705605.33188280
Values
Pen (1, 2, 0)
Rec=154
560242.901549743,2705588.25535868
560244.963010817,2705583.91624189
Values
Pen (1, 2, 0)
Rec=155
560235.966794690,2705584.57610758
560237.442800819,2705579.21719837
Values
Pen (1, 2, 0)
Rec=156
560237.442800819,2705579.21719837
560244.963010817,2705583.91624189
Values
Pen (1, 2, 0)
Rec=157
560254.627140332,2705624.32801619
560253.950981100,2705620.05888516
Values
Pen (1, 2, 0)
Rec=158
560243.190154293,2705621.37861654
560236.106974043,2705622.08847205
Values
Pen (1, 2, 0)
Rec=159

560236.106974043,2705622.08847205
560235.991532223,2705626.12764988
Values
Pen (1, 2, 0)
Rec=160
560235.991532223,2705626.12764988
560236.816116653,2705629.92687656
Values
Pen (1, 2, 0)
Rec=161
560236.816116653,2705629.92687656
560254.627140332,2705624.32801619
Values
Pen (1, 2, 0)
Rec=162
560278.944135161,2705616.96951400
560272.677293496,2705624.82791444
Values
Pen (1, 2, 0)
Rec=163
560272.677293496,2705624.82791444
560269.370709933,2705630.04685214
Values
Pen (1, 2, 0)
Rec=164
560269.370709933,2705630.04685214
560260.597131602,2705627.02746673
Values
Pen (1, 2, 0)
Rec=165
560260.597131602,2705627.02746673
560258.923225210,2705627.00747080
Values
Pen (1, 2, 0)
Rec=166
560258.923225210,2705627.00747080
560258.181099223,2705623.18824819
Values
Pen (1, 2, 0)
Rec=167
560258.181099223,2705623.18824819
560253.934489411,2705624.54797142
Values
Pen (1, 2, 0)
Rec=168
560257.084401932,2705615.84974192
560268.405946151,2705618.70915990

Values
Pen (1, 2, 0)
Rec=169
560268.405946151,2705618.70915990
560270.253015273,2705613.21027918
Values
Pen (1, 2, 0)
Rec=170
560270.253015273,2705613.21027918
560271.671300492,2705610.04092429
Values
Pen (1, 2, 0)
Rec=171
560288.443347790,2705626.94748301
560282.959861333,2705621.62856566
Values
Pen (1, 2, 0)
Rec=172
560285.573793975,2705619.00909884
560281.805443131,2705615.27985792
Values
Pen (1, 2, 0)
Rec=173
560281.805443131,2705615.27985792
560281.409642605,2705615.72976634
Values
Pen (1, 2, 0)
Rec=174
560281.409642605,2705615.72976634
560278.779218275,2705614.42003293
Values
Pen (1, 2, 0)
Rec=175
560293.209445793,2705611.35065770
560285.573793975,2705619.00909884
Values
Pen (1, 2, 0)
Rec=176
560315.984467738,2705641.31455863
560310.616423102,2705641.73447316
Values
Pen (1, 2, 0)
Rec=177
560310.616423102,2705641.73447316
560307.070710054,2705641.87444467
Values
Pen (1, 2, 0)

Rec=178
560307.070710054,2705641.87444467
560305.545228860,2705639.98482929
Values
Pen (1, 2, 0)
Rec=179
560305.545228860,2705639.98482929
560301.900565681,2705641.27456677
Values
Pen (1, 2, 0)
Rec=180
560301.900565681,2705641.27456677
560300.581230593,2705638.27517729
Values
Pen (1, 2, 0)
Rec=181
560300.581230593,2705638.27517729
560302.923050373,2705636.07562500
Values
Pen (1, 2, 0)
Rec=182
560302.923050373,2705636.07562500
560310.344310240,2705627.39739143
Values
Pen (1, 2, 0)
Rec=183
560307.070710054,2705641.87444467
560306.881055636,2705647.03339458
Values
Pen (1, 2, 0)
Rec=184
560306.881055636,2705647.03339458
560303.261129990,2705647.76324602
Values
Pen (1, 2, 0)
Rec=185
560303.261129990,2705647.76324602
560297.670447557,2705648.61307304
Values
Pen (1, 2, 0)
Rec=186
560297.670447557,2705648.61307304
560295.576003106,2705648.50309543
Values
Pen (1, 2, 0)
Rec=187
560295.576003106,2705648.50309543

560289.713207811,2705648.81303234
Values
Pen (1, 2, 0)
Rec=188
560289.713207811,2705648.81303234
560297.802381066,2705632.40637187
Values
Pen (1, 2, 0)
Rec=189
560297.802381066,2705632.40637187
560303.261129990,2705635.67570640
Values
Pen (1, 2, 0)
Rec=190
560289.713207811,2705648.81303234
560280.815941816,2705647.71325620
Values
Pen (1, 2, 0)
Rec=191
560280.815941816,2705647.71325620
560277.715504361,2705646.77344749
Values
Pen (1, 2, 0)
Rec=192
560277.715504361,2705646.77344749
560280.040832452,2705633.92606254
Values
Pen (1, 2, 0)
Rec=193
560280.040832452,2705633.92606254
560281.145775588,2705630.65672800
Values
Pen (1, 2, 0)
Rec=194
560281.145775588,2705630.65672800
560283.380399392,2705627.10745045
Values
Pen (1, 2, 0)
Rec=195
560283.380399392,2705627.10745045
560287.354896343,2705629.32699867
Values
Pen (1, 2, 0)
Rec=196
560287.354896343,2705629.32699867
560288.443347790,2705626.94748301
Values

Pen (1, 2, 0)
Rec=197
560288.443347790,2705626.94748301
560297.555005737,2705632.91626808
Values
Pen (1, 2, 0)
Rec=198
560288.888623382,2705627.23742399
560297.480793138,2705614.98991694
Values
Pen (1, 2, 0)
Rec=199
560304.498006634,2705621.80852903
560299.426812392,2705628.86709228
Values
Pen (1, 2, 0)
Rec=200
560299.426812392,2705628.86709228
560297.802381066,2705632.40637187
Values
Pen (1, 2, 0)
Rec=201
560275.794222640,2705648.02319311
560266.443435208,2705644.91382601
Values
Pen (1, 2, 0)
Rec=202
560266.443435208,2705644.91382601
560269.931427345,2705634.28598928
Values
Pen (1, 2, 0)
Rec=203
560269.931427345,2705634.28598928
560277.352687212,2705636.85546627
Values
Pen (1, 2, 0)
Rec=204
560277.352687212,2705636.85546627
560275.794222640,2705648.02319311
Values
Pen (1, 2, 0)
Rec=205
560277.352687212,2705636.85546627
560278.655530610,2705632.73630471
Values
Pen (1, 2, 0)
Rec=206

560278.655530610,2705632.73630471
560276.206514854,2705631.74650618
Values
Pen (1, 2, 0)
Rec=207
560276.206514854,2705631.74650618
560277.995863067,2705629.04705565
Values
Pen (1, 2, 0)
Rec=208
560277.995863067,2705629.04705565
560281.145775588,2705630.65672800
Values
Pen (1, 2, 0)
Rec=209
560269.931427345,2705634.28598928
560272.594835053,2705627.47737515
Values
Pen (1, 2, 0)
Rec=210
560272.594835053,2705627.47737515
560274.235758068,2705628.55715536
Values
Pen (1, 2, 0)
Rec=211
560274.235758068,2705628.55715536
560278.037092288,2705621.93850257
Values
Pen (1, 2, 0)
Rec=212
560278.037092288,2705621.93850257
560282.028080927,2705616.16967680
Values
Pen (1, 2, 0)
Rec=213
560282.028080927,2705616.16967680
560281.409642605,2705615.72976634
Values
Pen (1, 2, 0)
Rec=214
560346.675500208,2705662.78018937
560345.677753048,2705657.78120689
Values
Pen (1, 2, 0)
Rec=215
560345.677753048,2705657.78120689
560335.353955989,2705660.85058213

Values
Pen (1, 2, 0)
Rec=216
560335.353955989,2705660.85058213
560335.790985737,2705662.78018937
Values
Pen (1, 2, 0)
Rec=217
560335.353955989,2705660.85058213
560326.868982209,2705662.78018937
Values
Pen (1, 2, 0)
Rec=218
560317.279065293,2705662.78018937
560318.705596356,2705659.02095455
Values
Pen (1, 2, 0)
Rec=219
560318.705596356,2705659.02095455
560323.092385521,2705660.14072662
Values
Pen (1, 2, 0)
Rec=220
560323.092385521,2705660.14072662
560322.886239414,2705662.78018937
Values
Pen (1, 2, 0)
Rec=221
560304.283614682,2705662.78018937
560308.027227993,2705653.40209825
Values
Pen (1, 2, 0)
Rec=222
560314.896016291,2705662.78018937
560318.095403878,2705654.42189067
Values
Pen (1, 2, 0)
Rec=223
560318.095403878,2705654.42189067
560309.552709187,2705652.54227326
Values
Pen (1, 2, 0)
Rec=224
560309.552709187,2705652.54227326
560308.027227993,2705653.40209825
Values
Pen (1, 2, 0)

Rec=225
560273.922415984,2705662.78018937
560277.031099284,2705651.51248287
Values
Pen (1, 2, 0)
Rec=226
560277.031099284,2705651.51248287
560288.410364412,2705654.50187439
Values
Pen (1, 2, 0)
Rec=227
560288.410364412,2705654.50187439
560282.613535872,2705662.78018937
Values
Pen (1, 2, 0)
Rec=228
560285.334664490,2705662.78018937
560287.923859599,2705658.90097897
Values
Pen (1, 2, 0)
Rec=229
560287.923859599,2705658.90097897
560292.558024093,2705654.10195579
Values
Pen (1, 2, 0)
Rec=230
560292.558024093,2705654.10195579
560303.046738038,2705657.86119061
Values
Pen (1, 2, 0)
Rec=231
560303.046738038,2705657.86119061
560301.455290089,2705662.18031147
Values
Pen (1, 2, 0)
Rec=232
560301.455290089,2705662.18031147
560301.141948006,2705662.78018937
Values
Pen (1, 2, 0)
Rec=233
560291.626243688,2705662.78018937
560287.923859599,2705658.90097897
Values
Pen (1, 2, 0)
Rec=234
560383.245819660,2705662.40026670

560373.367298194,2705656.59144907
Values
Pen (1, 2, 0)
Rec=235
560373.367298194,2705656.59144907
560368.881558897,2705662.78018937
Values
Pen (1, 2, 0)
Rec=236
560322.449209666,2705581.38675676
560324.007674238,2705580.02703353
Values
Pen (1, 2, 0)
Rec=237
560330.975412668,2705582.51652680
560324.007674238,2705580.02703353
Values
Pen (1, 2, 0)
Rec=238
560332.979152832,2705596.83361260
560334.958155463,2705583.41634365
Values
Pen (1, 2, 0)
Rec=239
560334.982892996,2705583.22638231
560334.958155463,2705583.41634365
Values
Pen (1, 2, 0)
Rec=240
560334.958155463,2705583.41634365
560336.623816011,2705584.17618898
Values
Pen (1, 2, 0)
Rec=241
560336.623816011,2705584.17618898
560339.790220221,2705585.08600379
Values
Pen (1, 2, 0)
Rec=242
560339.790220221,2705585.08600379
560347.994835295,2705591.79463827
Values
Pen (1, 2, 0)
Rec=243
560322.845010192,2705579.66710679
560324.007674238,2705580.02703353
Values

Pen (1, 2, 0)
Rec=244
560347.994835295,2705591.79463827
560349.206974407,2705575.63792692
Values
Pen (1, 2, 0)
Rec=245
560324.007674238,2705580.02703353
560330.975412668,2705582.51652680
Values
Pen (1, 2, 0)
Rec=246
560331.767013721,2705582.38655326
560330.975412668,2705582.51652680
Values
Pen (1, 2, 0)
Rec=247
560331.767013721,2705582.38655326
560334.768501044,2705583.16639452
Values
Pen (1, 2, 0)
Rec=248
560334.768501044,2705583.16639452
560334.982892996,2705583.22638231
Values
Pen (1, 2, 0)
Rec=249
560313.139651456,2705601.40268258
560301.842844771,2705595.72383849
Values
Pen (1, 2, 0)
Rec=250
560282.959861333,2705621.62856566
560285.573793975,2705619.00909884
Values
Pen (1, 2, 0)
Rec=251
560222.979589924,2705550.00314481
560391.186567718,2705550.00314481
Values
Pen (1, 2, 0)
Rec=252
560222.476593422,2705650.00279017
560391.689564220,2705650.00279017
Values
Pen (1, 2, 0)
Rec=253

560349.998575459,2705662.78018937
560349.998575459,2705542.00477285
Values
Pen (1, 2, 0)
Rec=254
560250.001221682,2705662.78018937
560250.001221682,2705542.00477285
Values
Pen (1, 2, 0)
Rec=255
560322.251309403,2705545.69402191
560320.964957693,2705547.79359455
Values
Pen (1, 2, 0)
Rec=256
560318.994200906,2705550.99294333
560317.707849196,2705553.09251597
Values
Pen (1, 2, 0)
Rec=257
560344.407893026,2705554.04232264
560342.552578060,2705557.63159206
Values
Pen (1, 2, 0)
Rec=258
560340.928146734,2705560.77095305
560339.064585923,2705564.35022450
Values
Pen (1, 2, 0)
Rec=259
560355.490307760,2705574.29819962
560356.100500238,2705573.48836446
Values
Pen (1, 2, 0)
Rec=260
560358.244419755,2705570.63894445
560358.854612233,2705569.82910929
Values
Pen (1, 2, 0)
Rec=261
560380.186611427,2705586.55570464
560379.815548433,2705589.56509209
Values
Pen (1, 2, 0)
Rec=262
560379.370272841,2705593.14436354
560378.999209848,2705596.15375098

Values
Pen (1, 2, 0)
Rec=263
560361.872591245,2705596.45368993
560361.814870335,2705595.61386088
Values
Pen (1, 2, 0)
Rec=264
560361.592232539,2705592.15456501
560361.542757474,2705591.32473392
Values
Pen (1, 2, 0)
Rec=265
560291.123247186,2705585.78586134
560289.441094949,2705584.36615031
Values
Pen (1, 2, 0)
Rec=266
560314.120906927,2705550.88296572
560312.851046906,2705550.07313056
Values
Pen (1, 2, 0)
Rec=267
560317.180115161,2705576.22780685
560314.945491357,2705575.20801443
Values
Pen (1, 2, 0)
Rec=268
560323.356252539,2705556.83175486
560324.551899962,2705557.30165921
Values
Pen (1, 2, 0)
Rec=269
560354.764673462,2705559.22126848
560355.020294635,2705558.25146588
Values
Pen (1, 2, 0)
Rec=270
560355.803649844,2705555.24207844
560356.051025172,2705554.27227584
Values
Pen (1, 2, 0)
Rec=271
560364.346344534,2705573.96826677
560367.628190564,2705575.42796966
Values
Pen (1, 2, 0)

Rec=272
560369.104196693,2705564.05028555
560372.097438172,2705565.39001285
Values
Pen (1, 2, 0)
Rec=273
560380.664870396,2705562.39062337
560380.557674420,2705562.95050941
Values
Pen (1, 2, 0)
Rec=274
560379.922744409,2705566.36981342
560379.823794278,2705566.92969945
Values
Pen (1, 2, 0)
Rec=275
560377.671628916,2705584.28616660
560380.532936887,2705584.86604856
Values
Pen (1, 2, 0)
Rec=276
560382.561414584,2705567.43959567
560384.804284232,2705568.03947356
Values
Pen (1, 2, 0)
Rec=277
560359.877096926,2705621.98849240
560361.608724228,2705621.29863282
Values
Pen (1, 2, 0)
Rec=278
560355.086261390,2705605.04194182
560353.247438112,2705605.82178308
Values
Pen (1, 2, 0)
Rec=279
560352.084774066,2705591.93460978
560351.705465228,2705591.95460571
Values
Pen (1, 2, 0)
Rec=280
560348.398881666,2705592.16456297
560348.019572828,2705592.18455890
Values
Pen (1, 2, 0)
Rec=281
560352.455837059,2705574.69811822

560349.248203628,2705574.56814467
Values
Pen (1, 2, 0)
Rec=282
560317.699603352,2705589.91502086
560320.536173790,2705590.69486212
Values
Pen (1, 2, 0)
Rec=283
560233.872350239,2705605.33188280
560235.414323122,2705606.36167319
Values
Pen (1, 2, 0)
Rec=284
560277.031099284,2705651.51248287
560277.138295260,2705651.16255410
Values
Pen (1, 2, 0)
Rec=285
560278.300959306,2705647.33333353
560278.408155282,2705646.98340475
Values
Pen (1, 2, 0)
Rec=286
560269.370709933,2705630.04685214
560271.291991654,2705630.79669951
Values
Pen (1, 2, 0)
Rec=287
560243.074712473,2705614.29005939
560243.519988065,2705615.69977245
Values
Pen (1, 2, 0)
Rec=288
560256.573159586,2705611.55061700
560256.160867371,2705610.23088562
Values
Pen (1, 2, 0)
Rec=289
560315.984467738,2705641.31455863
560319.925981312,2705639.83485982
Values
Pen (1, 2, 0)
Rec=290
560319.925981312,2705639.83485982
560315.654633966,2705632.79629250
Values

Pen (1, 2, 0)
Rec=291
560315.654633966,2705632.79629250
560310.665898167,2705627.69733038
Values
Pen (1, 2, 0)
Rec=292
560310.665898167,2705627.69733038
560304.596956766,2705621.89851071
Values
Pen (1, 2, 0)
Rec=293
560304.596956766,2705621.89851071
560296.367604158,2705613.91013672
Values
Pen (1, 2, 0)
Rec=294
560296.367604158,2705613.91013672
560290.471825487,2705609.12111151
Values
Pen (1, 2, 0)
Rec=295
560290.471825487,2705609.12111151
560286.835408152,2705606.12172203
Values
Pen (1, 2, 0)
Rec=296
560286.835408152,2705606.12172203
560278.779218275,2705614.42003293
Values
Pen (1, 2, 0)
Rec=297
560289.300915597,2705560.89092863
560286.126265543,2705569.78911743
Values
Pen (1, 2, 0)
Rec=298
560286.126265543,2705569.78911743
560286.719966332,2705570.08905638
Values
Pen (1, 2, 0)
Rec=299
560286.719966332,2705570.08905638
560280.824187660,2705580.96684223
Values
Pen (1, 2, 0)
Rec=300

560280.824187660,2705580.96684223
560288.393872724,2705585.62589390
Values
Pen (1, 2, 0)
Rec=301
560288.393872724,2705585.62589390
560291.585014466,2705581.80667129
Values
Pen (1, 2, 0)
Rec=302
560291.585014466,2705581.80667129
560301.051243718,2705569.35920494
Values
Pen (1, 2, 0)
Rec=303
560301.051243718,2705569.35920494
560289.300915597,2705560.89092863
Values
Pen (1, 2, 0)
Rec=304
560302.898312840,2705570.48897497
560296.458308445,2705578.93725535
Values
Pen (1, 2, 0)
Rec=305
560296.458308445,2705578.93725535
560290.917101079,2705586.04580843
Values
Pen (1, 2, 0)
Rec=306
560290.917101079,2705586.04580843
560302.345841273,2705593.53428417
Values
Pen (1, 2, 0)
Rec=307
560302.345841273,2705593.53428417
560301.331602424,2705595.66385070
Values
Pen (1, 2, 0)
Rec=308
560301.331602424,2705595.66385070
560301.719157106,2705595.81382018
Values
Pen (1, 2, 0)
Rec=309
560301.719157106,2705595.81382018
560301.842844771,2705595.72383849

Values
Pen (1, 2, 0)
Rec=310
560301.842844771,2705595.72383849
560313.139651456,2705601.40268258
Values
Pen (1, 2, 0)
Rec=311
560313.139651456,2705601.40268258
560317.180115161,2705591.51469525
Values
Pen (1, 2, 0)
Rec=312
560317.180115161,2705591.51469525
560305.767866656,2705586.05580639
Values
Pen (1, 2, 0)
Rec=313
560306.336829912,2705584.75607095
560317.592407376,2705590.19496388
Values
Pen (1, 2, 0)
Rec=314
560317.592407376,2705590.19496388
560321.500937572,2705579.97704371
Values
Pen (1, 2, 0)
Rec=315
560321.500937572,2705579.97704371
560310.970994406,2705574.22821386
Values
Pen (1, 2, 0)
Rec=316
560321.385495752,2705587.55550113
560319.348772211,2705595.10396466
Values
Pen (1, 2, 0)
Rec=317
560319.348772211,2705595.10396466
560332.896694389,2705597.29351899
Values
Pen (1, 2, 0)
Rec=318
560332.896694389,2705597.29351899
560332.979152832,2705596.83361260
Values
Pen (1, 2, 0)

Rec=319
560332.979152832,2705596.83361260
560342.692757413,2705596.83361260
Values
Pen (1, 2, 0)
Rec=320
560342.692757413,2705596.83361260
560342.676265724,2705595.93379575
Values
Pen (1, 2, 0)
Rec=321
560342.676265724,2705595.93379575
560348.184489714,2705594.81402368
Values
Pen (1, 2, 0)
Rec=322
560348.077293738,2705600.79280672
560345.314935899,2705602.27250553
Values
Pen (1, 2, 0)
Rec=323
560345.314935899,2705602.27250553
560344.564564068,2705600.89278637
Values
Pen (1, 2, 0)
Rec=324
560344.564564068,2705600.89278637
560340.210758280,2705601.18272735
Values
Pen (1, 2, 0)
Rec=325
560340.210758280,2705601.18272735
560338.784227217,2705601.92257676
Values
Pen (1, 2, 0)
Rec=326
560338.784227217,2705601.92257676
560338.495622666,2705601.23271717
Values
Pen (1, 2, 0)
Rec=327
560338.495622666,2705601.23271717
560337.357696153,2705601.69262356
Values
Pen (1, 2, 0)
Rec=328
560337.357696153,2705601.69262356

560337.209270956,2705601.47266833
Values
Pen (1, 2, 0)
Rec=329
560337.209270956,2705601.47266833
560334.669550913,2705602.78240174
Values
Pen (1, 2, 0)
Rec=330
560334.669550913,2705602.78240174
560334.389192207,2705602.28250349
Values
Pen (1, 2, 0)
Rec=331
560334.389192207,2705602.28250349
560329.499406539,2705603.68221859
Values
Pen (1, 2, 0)
Rec=332
560329.499406539,2705603.68221859
560326.440198306,2705610.78077370
Values
Pen (1, 2, 0)
Rec=333
560326.440198306,2705610.78077370
560328.839738996,2705612.86035040
Values
Pen (1, 2, 0)
Rec=334
560322.449209666,2705581.38675676
560321.385495752,2705587.55550113
Values
Pen (1, 2, 0)
Rec=335
560305.767866656,2705586.05580639
560302.345841273,2705593.53428417
Values
Pen (1, 2, 0)
Rec=336
560249.555946090,2705586.22577179
560254.891007349,2705578.39736524
Values
Pen (1, 2, 0)
Rec=337
560259.648859508,2705571.40878775
560265.305508695,2705563.10047888
Values

Pen (1, 2, 0)
Rec=338
560329.499406539,2705603.68221859
560329.738536024,2705602.19252181
Values
Pen (1, 2, 0)
Rec=339
560330.348728502,2705598.40329310
560330.587857986,2705596.91359632
Values
Pen (1, 2, 0)
Rec=340
560342.453627928,2705596.85360853
560342.478365461,2705597.23353120
Values
Pen (1, 2, 0)
Rec=341
560342.709249101,2705600.63283928
560342.733986634,2705601.01276195
Values
Pen (1, 2, 0)
Rec=342
560306.881055636,2705647.03339458
560307.120185120,2705648.35312595
Values
Pen (1, 2, 0)
Rec=343
560307.788098508,2705652.08236688
560308.027227993,2705653.40209825
Values
Pen (1, 2, 0)
Rec=344
560312.158395985,2705603.18232034
560313.073684702,2705601.37268868
Values
Pen (1, 2, 0)
Rec=345
560301.010014497,2705597.00357800
560301.488273466,2705595.72383849
Values
Pen (1, 2, 0)
Rec=346
560305.784358344,2705613.58020388
560304.588710921,2705614.80995357
Values
Pen (1, 2, 0)
Rec=347

560302.238645297,2705617.22946108
560301.042997874,2705618.45921077
Values
Pen (1, 2, 0)
Rec=348
560295.988295321,2705605.65181768
560295.147219202,2705606.69160603
Values
Pen (1, 2, 0)
Rec=349
560292.945578775,2705609.40105453
560292.096256813,2705610.45084085
Values
Pen (1, 2, 0)
Rec=350
560305.784358344,2705613.58020388
560306.518238486,2705613.99012044
Values
Pen (1, 2, 0)
Rec=351
560309.552709187,2705615.70977041
560310.286589330,2705616.12968494
Values
Pen (1, 2, 0)
Rec=352
560312.158395985,2705603.18232034
560312.512967290,2705603.36228371
Values
Pen (1, 2, 0)
Rec=353
560315.803059164,2705605.04194182
560316.149384624,2705605.22190519
Values
Pen (1, 2, 0)
Rec=354
560354.764673462,2705559.22126848
560354.616248265,2705562.26064983
560354.566773199,2705563.45040765
Values
Pen (1, 2, 0)
Rec=355
560385.777293859,2705588.36533629
560385.925719057,2705588.73526100
560387.970688442,2705588.76525489
560390.023903672,2705588.79524879
Values
Pen (1, 2, 0)

Rec=356
560355.506799449,2705606.02174238
560355.086261390,2705605.04194182
560353.766926302,2705598.04336636
560361.872591245,2705596.45368993
560362.425062813,2705599.64304075
560364.338098690,2705599.46307738
Values
Pen (1, 2, 0)
Rec=357
560365.533746113,2705556.53181591
560367.455027834,2705557.29166125
560366.902556266,2705558.81135192
560371.726375179,2705560.31104666
560373.243610529,2705560.62098358
560380.664870396,2705562.39062337
560381.497700670,2705559.44122371
560381.992451328,2705555.73197872
560382.388251854,2705553.07252004
Values
Pen (1, 2, 0)
Rec=358
560389.182827554,2705577.80748531
560389.817757564,2705574.35818741
560390.180574713,2705572.05865547
560390.972175766,2705568.50937791
Values
Pen (1, 2, 0)
Rec=359
560368.535233437,2705608.09132113
560384.383746173,2705605.66181564
560391.021650832,2705604.59203340
560391.582368244,2705604.54204357
560391.689564220,2705607.15151242
Values
Pen (1, 2, 0)
Rec=360
560391.689564220,2705618.06929014
560389.875478475,2705618.91911716
560370.143173074,2705619.48900116
Values
Pen (1, 2, 0)
Rec=361
560335.683789761,2705562.60058063
560349.446103891,2705569.72912964
560349.206974407,2705575.63792692
Values

Pen (1, 2, 0)
Rec=362
560271.671300492,2705610.04092429
560274.664541971,2705612.42043995
560276.132302256,2705613.88014283
560278.944135161,2705616.96951400
Values
Pen (1, 2, 0)
Rec=363
560331.486655015,2705614.55000648
560332.789498413,2705613.81015707
560334.298487920,2705615.84974192
560344.135780165,2705620.71875085
560349.561545711,2705618.85912937
Values
Pen (1, 2, 0)
Rec=364
560390.320754066,2705656.84139819
560379.642385703,2705654.38189881
560368.073466156,2705650.53268231
560353.387617465,2705644.94381991
560342.420644551,2705640.22478045
560327.462682998,2705631.84648583
560326.530902593,2705633.57613377
560326.934948963,2705634.64591601
560342.486611306,2705642.95422488
560361.963295533,2705650.93260091
560375.453496801,2705655.58165461
560388.811764560,2705658.98096269
Values
Pen (1, 7, 0)
Rec=365
560391.689564220,2705639.12500431
560379.312551931,2705636.07562500
560364.024756607,2705630.55674835
560352.983571094,2705626.03766820
560334.174800255,2705616.25965848
560322.614126552,2705608.89115832
560321.418479129,2705610.15090190
560334.842713643,2705618.71915786
560345.207739923,2705624.76792665
560363.958789852,2705633.14622127
560380.508199354,2705638.99503077
560391.689564220,2705641.65448944
Values
Pen (1, 7, 0)
Rec=366

560286.835408152,2705606.12172203
560281.187004809,2705601.49266426
560245.597940828,2705579.65710883
560222.476593422,2705567.14965468
Values
Pen (1, 7, 0)
Rec=367
560224.645250472,2705546.67382248
560223.754699288,2705549.11332593
560224.208220724,2705549.56323435
560244.995994194,2705562.27064779
560300.927556054,2705597.14354951
Values
Pen (1, 7, 0)
Rec=368
560301.587223597,2705595.12396059
560277.451637343,2705580.21699486
560226.302665175,2705548.21350908
560227.795162993,2705544.47427019
560226.896365965,2705544.35429461
Values
Pen (1, 7, 0)
Rec=369
560332.517385552,2705631.25660590
560324.411720609,2705636.44554970
560314.871278758,2705624.21803858
560308.736370602,2705618.86912733
560313.222109899,2705610.94074113
560318.524187781,2705600.59284742
560328.971672504,2705602.19252181
560328.163579763,2705606.78158772
560326.440198306,2705610.78077370
560326.720557012,2705611.02072485
560325.961939336,2705612.34045623
560325.269288416,2705612.00052542
560321.039170292,2705617.23945905
560318.573662847,2705621.20865113
560323.677840466,2705627.87729375
560327.322503645,2705625.55776588
560329.260277055,2705628.60714519
560330.431186945,2705627.89728968
560332.517385552,2705631.25660590
Values
Pen (1, 7, 0)

3- SAK_DETAILS_POINT.TXT :
tabname=SAK_DETAILS_POINT
Fields=1
STYLE_STR
ObjType=1

4- SAK_DETAILS_POLYGON.TXT:
tabname=SAK_DETAILS_POLYGON
Fields=1
STYLE_STR
ObjType=3
Rec=1
560352.060036533,2705553.08251801
560355.160473988,2705554.04232264
560361.064498504,2705555.58200924
560365.451287670,2705556.74177318
560367.520994588,2705551.47284565
560369.912289434,2705545.60404023
560353.412354998,2705542.52466703
560352.060036533,2705553.08251801
Values
Pen (1, 2, 0) Brush (1, 0, 16777215)
Rec=2
560357.122984931,2705610.02092836
560360.932564996,2705609.18109930
560368.535233437,2705608.09132113
560368.972263184,2705612.94033412
560369.631930728,2705619.48900116
560370.143173074,2705619.48900116
560370.126681386,2705621.25864096
560361.682936827,2705621.48859415
560357.122984931,2705610.02092836
Values
Pen (1, 2, 0) Brush (1, 0, 16777215)
Rec=3
560345.644769671,2705609.30107488
560353.230946423,2705605.78179122
560354.278168649,2705608.25128856
560355.737683089,2705611.91054373
560356.966313889,2705614.82994950
560359.877096926,2705621.98849240
560351.903365492,2705624.51797753
560349.825412729,2705619.43901134
560349.462595580,2705618.59918228
560346.782696184,2705612.09050710
560345.644769671,2705609.30107488
Values
Pen (1, 2, 0) Brush (1, 0, 16777215)

Rec=4
560305.784358344,2705613.58020388
560295.988295321,2705605.65181768
560301.010014497,2705597.00357800
560312.158395985,2705603.18232034
560305.784358344,2705613.58020388
Values
Pen (3, 2, 16711680) Brush (1, 0, 16777215)

5- SAK_DETAILS_TEXT.TXT:
tabname=SAK_DETAILS_TEXT
Fields=1
STR_TEXT
ObjType=1
Rec=1
560208.804983579,2705650.85261719
Values
2705650
Rec=2
560249.877534017,2705666.03952594
Values
560250
Rec=3
560349.825412729,2705666.56941808
Values
560350
Rec=4
560396.266007804,2705549.46325470
Values
2705550
Rec=5
560208.780246046,2705550.80298200
Values
2705550
Rec=6
560395.070360381,2705650.00279017
Values
2705650
Rec=7
560249.580683623,2705531.05700124
Values
560250
Rec=8
560349.338907916,2705529.76726376
Values
560350
Rec=9

560361.155202792,2705593.16435947
Values
5.14
Rec=10
560379.988711164,2705592.21455280
Values
9.67
Rec=11
560341.785714540,2705560.19107108
Values
11.61
Rec=12
560319.901243779,2705550.45305323
Values
8.68
Rec=13
560277.863929558,2705650.45269859
Values
4.73
Rec=14
560353.948334877,2705606.06173424
Values
2.00
Rec=15
560360.206930698,2705622.39840896
Values
1.86
Rec=16
560350.064542214,2705575.09803681
Values
3.21
Rec=17
560349.322416227,2705592.60447343
Values
4.07
Rec=18
560364.956537012,2705574.78809990
Values
3.59
Rec=19
560369.524734752,2705564.79013496
Values
3.28
Rec=20
560380.574166109,2705565.58997215
Values
4.62

Rec=21
560382.685102248,2705567.97948577
Values
2.32
Rec=22
560378.215854640,2705584.89604246
Values
2.92
Rec=23
560355.737683089,2705557.43163276
Values
5.11
Rec=24
560315.044441489,2705575.78789639
Values
2.45
Rec=25
560318.392254273,2705590.62487637
Values
3.07
Rec=26
560289.185473776,2705584.80606077
Values
2.28
Rec=27
560233.963054526,2705605.80178715
Values
1.85
Rec=28
560323.331515006,2705557.20167956
Values
1.28
Rec=29
560357.081755709,2705573.01846010
Values
5.59
Rec=30
560279.364673220,2705617.33943870
Values
2.06
Rec=31
560269.651068639,2705630.59674021
Values
2.07
Rec=32
560242.720141169,2705614.49001869
Values

1.48
Rec=33
560255.781558533,2705610.35086120
Values
1.38
Rec=34
560256.177359060,2705577.38757078
Values
27.98
Rec=35
560316.883264767,2705591.11477665
Values
1.38
Rec=36
560330.043632263,2705601.20272328
Values
6.85
Rec=37
560342.428890395,2705598.19333583
Values
4.17
Rec=38
560312.925259504,2705550.54303491
Values
1.51
Rec=39
560307.318085383,2705649.50289192
Values
6.47
Rec=40
560301.677927885,2705596.64365127
Values
1.37
Rec=41
560312.677884176,2705602.27250553
Values
2.03
Rec=42
560303.343588433,2705616.79954859
Values
6.80
Rec=43
560294.009292690,2705608.88116036
Values
6.17
Rec=44
560317.229590227,2705618.55919042

Values
1413
Rec=45
560313.065438858,2705604.21211073
Values
4.48
Rec=46
560307.111939276,2705614.88993729
Values
5.18
Rec=47
560306.213142248,2705604.53204561
Values
ÇáãæþÚ
Rec=48
560270.714782553,2705605.40186856
Values
ÝÖÇÁ
Rec=49
560254.841532284,2705593.81422719
Values
Ô
Rec=50
560244.773356398,2705604.40207206
Values
Ô
Rec=51
560234.317625831,2705593.68425364
Values
Ô
Rec=52
560239.611457869,2705583.99622561
Values
Ô
Rec=53
560252.004961846,2705607.88136386
Values
Ô
Rec=54
560249.547700246,2705617.17947126
Values
Ô
Rec=55
560242.579961816,2705625.18784118
Values
Ô
Rec=56

560267.243282105,2705621.18865520

Values

\hat{O}

Rec=57

560272.273247125,2705641.06460951

Values

\hat{O}

Rec=58

560280.148028428,2705624.28802433

Values

\hat{O}

Rec=59

560284.930618120,2705611.89054780

Values

\hat{O}

Rec=60

560290.480071331,2705617.95931252

Values

\hat{O}

Rec=61

560297.068500923,2705622.73833977

Values

\hat{O}

Rec=62

560288.154743239,2705637.71529125

Values

\hat{O}

Rec=63

560298.231164969,2705643.39413534

Values

\hat{O}

Rec=64

560308.299340854,2705635.25579188

Values

\hat{O}

Rec=65

560304.168172862,2705628.41718386

Values

\hat{O}

Rec=66

560308.554962028,2705592.52448971

Values

\hat{O}

Rec=67

560312.430508847,2705582.06661838

Values

\hat{O}

Rec=68
560326.374231551,2705569.40919476
Values
Ô

Rec=69
560313.593172892,2705562.44061319
Values
Ô

Rec=70
560304.555727544,2705574.31819555
Values
Ô

Rec=71
560300.812114234,2705582.70648813
Values
Ô

Rec=72
560326.506165060,2705588.77525285
Values
Ô

Rec=73
560338.256493182,2705591.10477869
Values
Ô

Rec=74
560341.612551810,2705578.31738152
Values
Ô

Rec=75
560358.137223779,2705583.86625207
Values
Ô

Rec=76
560352.068282377,2705614.98991694
Values
Ô

Rec=77
560364.461786354,2705613.83015300
Values
Ô

Rec=78
560380.475215977,2705601.69262356
Values
Ô

Rec=79
560370.794594774,2705600.91278230
Values

Ô
Rec=80
560358.269157288,2705602.72241395
Values
Ô
Rec=81
560383.963208114,2705582.19659192
Values
Ô
Rec=82
560386.544157379,2705572.76851098
Values
Ô
Rec=83
560374.406274575,2705572.76851098
Values
Ô
Rec=84
560361.493282408,2705565.53998233
Values
Ô
Rec=85
560373.631165211,2705556.88174469
Values
Ô
Rec=86
560375.824559794,2705548.62342564
Values
Ô
Rec=87
560358.656711970,2705548.23350501
Values
Ô
Rec=88
560339.287223719,2705546.68382044
Values
Ô
Rec=89
560293.192954104,2705567.72953665
Values
Ô
Rec=90
560288.418610257,2705577.67751177
Values
Ô
Rec=91
560265.816751042,2705552.23269099

Values
Ô
Rec=92
560277.830946181,2705545.65403005
Values
Ô
Rec=93
560244.773356398,2705547.33368817
Values
Ô
Rec=94
560284.683242791,2705586.23576976
Values
ÑÕíÝ
Rec=95
560350.715963913,2705645.34373850
Values
ÑÕíÝ
Rec=96
560364.263886091,2705632.28639629
Values
ÑÕíÝ
Rec=97
560284.130771223,2705561.02090217
Values
ÝÖÇÁ
Rec=98
560253.019200694,2705559.20127255
Values
ÝÖÇÁ
Rec=99
560275.027359120,2705587.50551131
Values
ÔÇÑÚ ÇÓÝáÊ
Rec=100
560319.653868450,2705626.88749522
Values
ÈãæìÈ ãÕæÑÇÊ ÚÇã
Rec=101
560301.092472940,2705556.88174469
Values
ã2
Rec=102
560294.372109839,2705546.03395272
Values
ã2
Rec=103

	<div>560337.374187842,2705607.37146765</div> <div>Values</div> <div>ã2</div> <div>Rec=104</div> <div>560381.530684047,2705612.79036465</div> <div>Values</div> <div>ã</div> <div>Rec=105</div> <div>560342.387661174,2705614.85994339</div> <div>Values</div> <div>ãÓïï</div> <div>Rec=106</div> <div>560366.704656003,2705641.98442228</div> <div>Values</div> <div>ÔÇÑÚ ÇÓÝáÊ</div> <div>Rec=107</div> <div>560325.656843097,2705599.53306313</div> <div>Values</div> <div>ÔÇÑÚ</div> <div>Rec=108</div> <div>560331.651571901,2705554.70218833</div> <div>Values</div> <div>ÔÇÑÚ</div> <div>Rec=109</div> <div>560362.837355028,2705576.65771934</div> <div>Values</div> <div>ÔÇÑÚ</div> <div>Rec=110</div> <div>560311.729612082,2705609.26108302</div> <div>Values</div> <div>ÔÇÑÚ</div> <div>Rec=111</div> <div>560311.531711818,2705624.27802637</div> <div>Values</div> <div>ÔÇÑÚ ÇÓÝáÊ</div> <div>Rec=112</div> <div>560307.103693431,2705599.68303261</div> <div>Values</div> <div>ÒÐÇÐ</div> <div>Rec=113</div> <div>560312.504721445,2705588.92522233</div> <div>Values</div> <div>ÒÐÇÐ</div> <div>Rec=114</div> <div>560350.435605207,2705583.02642301</div> <div>Values</div> <div>ÒÐÇÐ</div>
--	---

Rec=115
560357.362114416,2705614.10009806
Values
ÒÐÇÐ
Rec=116
560381.159621054,2705576.88767254
Values
ÒÐÇÐ
Rec=117
560280.024340764,2705658.43107461
Values
Ô
Rec=118
560295.262661022,2705659.60083651
Values
Ô
Rec=119
560320.824778340,2705661.92036438
Values
Ô
Rec=120
560311.894528967,2705657.92117840
Values
ã 2
Rec=121
560313.189126522,2705644.36393794
Values
ÝÖÇÁ
Rec=122
560293.110495661,2705650.94259887
Values
ÔÇÑÚ
Rec=123
560339.394419695,2705647.59328062
Values
ÝÖÇÁ
Rec=124
560375.024712897,2705624.85790834
Values
ÝÖÇÁ
Rec=125
560320.412486125,2705586.09579825
Values
ÒÐÇÐ
Rec=126
560302.997262972,2705567.17964858
Values

	<div>ÒÐÇÐ</div> <div>Rec=127</div> <div>560276.239498232,2705621.81852699</div> <div>Values</div> <div>ÒÐÇÐ</div> <div>Rec=128</div> <div>560241.376068548,2705595.34391582</div> <div>Values</div> <div>ÒÐÇÐ</div> <div>Rec=129</div> <div>560251.394769368,2705612.06051321</div> <div>Values</div> <div>ÒÐÇÐ</div>
Issues	None

Madinah Municipality Representative	GeoTech Representative
Name:	Name:
Signature: _____	Signature: _____
Date: / /2019	Date: / /2019
Comments:	Comments:
Attendees:	
_____	_____
_____	_____
_____	_____